

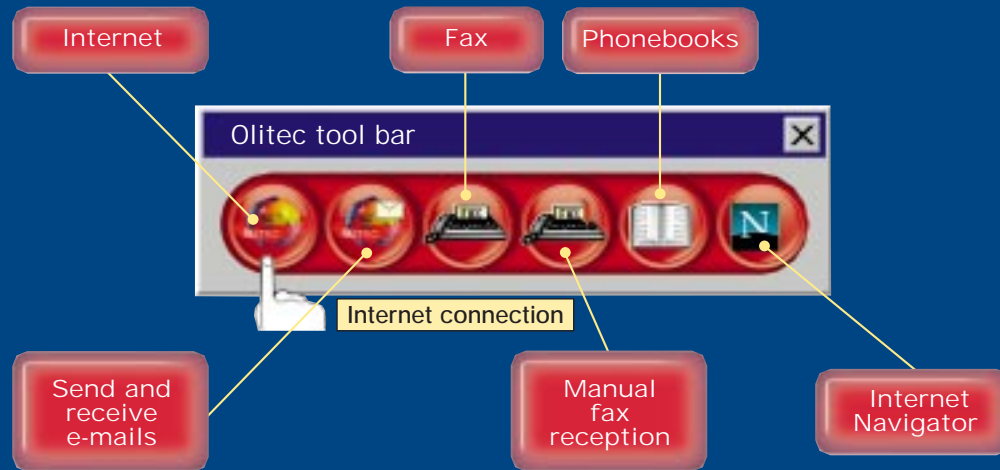
Computer switched off or without computer:

■ **Total control keyboard, direct access to information**

- VOICE ANNOUNCEMENT OF THE NUMBER OF FAXES, MESSAGES OR E-MAILS RECEIVED.
- LETS YOU LISTEN TO MESSAGES VIA THE SELF MEMORY 2000 BUILT-IN SPEAKER.
- DELETE RECEIVED MESSAGES
- DIRECT ACCESS TO THE HANDS-FREE FUNCTIONS.
- RETAKE THE LINE IF THE MODEM ANSWERS CALL BEFORE YOU DO.
- RECORD YOUR WELCOME MESSAGE.



INTERNET MADE EASY WITH THE OLITEC TOOL BAR



With the permanent Olitec tool bar you have direct access to the Internet, your e-mail, phonebooks and faxes any time and from any application... (you can personalise up to 10 different buttons). Windows 95 and 98 compatible.



TECHNICAL SPECIFICATIONS

Self Memory
"2000"

56000 - V90

■ **Modulations:**

CCITT DATACOM STANDARDS: 56000bps (K56flex and V90), 33600bps and 28.8 kbs (ITU-T V34), 14400bps (ITU-T V32bis), 9600bps (ITU-T V32), 2400bps, (ITU-T V22bis), 1200bps (ITU-T V22), 300bps (ITU-T V21).

FAX STANDARDS: 14400bps (ITU-T V17), 9600bps (ITU-T V29) 4800bps (ITU-T V27ter), 300bps (ITU-T V21ch2).

■ **Connections:**

Supports ITU-T V8bis/V8 Fast Connect protocol.

■ **Command language:**

DATA AND VOICE: classic AT and Olitec extended command set.

■ **Protocols:**

DATA: error correction (ITU-T V42, MNP4), data compression (ITU-T V42bis, MNP5), optimisation (MNP10).

FAX: group 3 send and receive, high or low resolution (ITU-T T4), (ITU-T T30), class 1 and 2

VOICE: full duplex speakerphone (hands-free), external amplifier connector, video conferencing V80 (H324), ADPCM audio coding.

■ **DTE - DCE:**

SPEED: automatic detection from 300 to 115200bps.

FLOW CONTROL: XON/XOFF, RTS/CTS.

INTERFACE: serial.

CONNECTOR: 9 pin female.

TELEPHONE CONNECTOR: RJ11.

■ **Flash memory:**

Flash upgradeable modem.

■ **Audio output:**

3,5mm female stereo jack to connect external amplifier or headset (not supplied).

■ **Audio input:**

3,5mm female stereo jack to connect stand microphone (not supplied) for hands-free operations and recording outgoing messages.

■ **Dimensions:**

100 x 154 x 28 mm

■ **Approvals:**

Complies with CTR21 European approval.

■ **Software supplied:**

OLICOM - OLIFAX/VOICE.

■ **Guarantee:**

3 years.

■ **Minimum system requirements:**

- Windows 3.1, 3.11, 95 or 98
- 486 with 8 MB of PC RAM • hard disk
- SVGA screen • floppy disk drive
- microphone
- analogue telephone line.

Computer switched off or without computer

OLITEC



Self Memory
"2000"

56000
V90



MODEM, FAX,
FULLY FEATURED
ANSWERING MACHINE,
E-MAIL,
INTERNET

Total Control Keyboard, direct access to information

Receive and save faxes, messages and e-mails, even when your PC is switched off !*

Economy mode - means you won't pay for remote access calls unless you have received a message

Voice announcement of the number of faxes, messages or e-mails received

Automatically prints faxes

Retrieves e-mails at pre-planned times



SelfMemory 2000 is brought to you by Olitec the leading European designer and manufacturer of quality modems.

WEB site: <http://www.olitec.com>



WEB site: <http://www.olitec.com>

STUDIO ZEBRE - 03 83 32 77 78 - 02 / 1999 - Illustrations and text for information purpose only. *only with an Internet subscription and only if your provider has implemented this function.

Self Memory "2000"
efficient and easy to use

**OLITEC offers
leader softwares!**

● **OLIFAX/VOICE**

This application is the culmination of OLITEC's 10 year experience in modem software. The latest version supplied with the SmartMemory has Windows 98 and MAC OS8 interface for maximum user friendliness: help messages, configuration assistant, 256 colour icons, Drag&Drop and other new features.



- Automatically prints faxes
- Send faxes to one or more addressees at a pre-planned time
- Retrieves e-mails at pre-planned times
- Phonebooks
- Sent and received messages log books (voice messages, faxes, e-mails)
- Hands-free telephone*

● **OLICOM**

Secure high speed file transfers (Zmodem, Ymodem batch).

● **OLITEC TOOL BAR**

With the permanent Olitec tool bar you have direct access to the Internet, your e-mail, phonebooks and faxes any time and from any application.

● **OLITEC STARTER**

Start all software supplied with Self Memory from the Windows set up screen.

* Only if you have a microphone.

Modem, fax, fully featured answering machine, stand-alone mode Self Memory "2000"

**Computer
switched off
or without
computer**

Self Memory "2000"

The only modem equipped with **Message Notify Mode** and **Economy Mode**

**MESSAGE NOTIFY
MODE**

- Notifies you the moment you receive a fax, an e-mail or a message - on your mobile, your pager or telephone - wherever you are !
- Remote fax retrieval (exclusive to Olitec)
- Remote password protected access to voice messages
- E-mail reception notification (only if option "delete server message" in OLIFAX configuration is not enabled).

**ECONOMY
MODE**

- Means you won't pay for remote access calls unless you have received a message !
- Voice announcement of the number of faxes, messages or e-mails received.

- Surf on the Net at high speed (56000 bps)
- Download from news sites
- Create your own e-mail address
- On-line shopping

Internet offer
Comes with
**Netscape Communicator Pro
(full version) and one
month free Internet access
with CompuServe**



Advantages

- High resolution fax
- Modem speed up to 56000bps
- Digital answering machine
- Hands-free telephone (only if you have a microphone)
- Flash memory
- Video conferencing V80 (H324)
- Year 2000 compliant
- Plug & Play, easy install